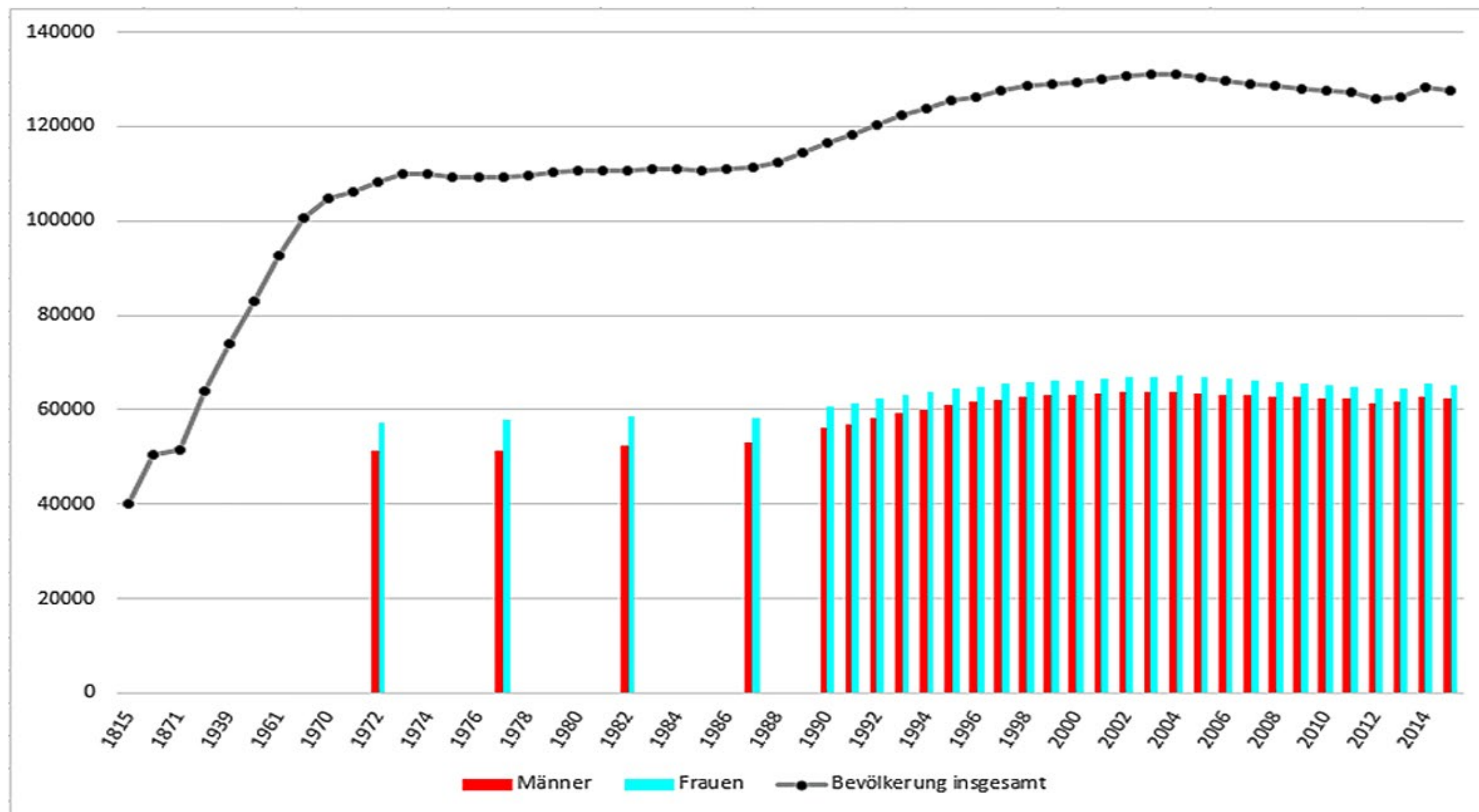


# Kreis Ahrweiler

## Bevölkerungsentwicklung seit 1815



Bevölkerungsentwicklung			
Jahr	Männer	Frauen	Bevölkerung insgesamt
1815	-	-	40.119
1835	-	-	50.317
1871	-	-	51.417
1905	-	-	63.914
1939	-	-	73.995
1950	-	-	82.996
1961	-	-	92.757
1965	-	-	100.755
1970	-	-	104.699
1971	-	-	106.036
1972	51.149	57.178	108.327
1973	-	-	109.879
1974	-	-	109.878
1975	-	-	109.435
1976	-	-	109.402
1977	51.453	57.934	109.387
1978	-	-	109.560
1979	-	-	110.185
1980	-	-	110.660
1981	-	-	110.658
1982	52.232	58.499	110.731
1983	-	-	111.059
1984	-	-	110.921
1985	-	-	110.742
1986	-	-	110.929
1987	53.201	58.290	111.491
1988	-	-	112.280
1989	-	-	114.373
1990	56.029	60.553	116.582
1991	57.015	61.329	118.344
1992	58.222	62.225	120.447
1993	59.297	62.990	122.287
1994	60.114	63.730	123.844
1995	60.940	64.437	125.377
1996	61.545	64.777	126.322
1997	62.214	65.352	127.566
1998	62.750	65.754	128.504
1999	62.910	66.037	128.947
2000	63.171	66.291	129.462
2001	63.558	66.583	130.141
2002	63.934	66.838	130.772
2003	63.873	67.027	130.900
2004	63.912	67.064	130.976
2005	63.565	66.902	130.467
2006	63.118	66.402	129.520
2007	62.944	66.152	129.096
2008	62.765	65.744	128.509
2009	62.652	65.411	128.063
2010	62.349	65.094	127.443
2011	62.245	64.916	127.161
2012	61.322	64.515	125.837
2013	61.536	64.566	126.102
2014	62.573	65.657	128.230
2015	62.533	65.237	127.770

Quelle: Statistisches Landesamt Rheinland-Pfalz  
 Stand: 31.12.2015  
 Hergestellt für die Kreisverwaltung Ahrweiler  
 Datum: 08/2016